


catching the sun

Enter a coastal home that opens itself to the elements for easy indoor and outdoor entertaining all year round

PRODUCED BY HELEN ADAMS PHOTOGRAPHY GORTA YUUKI STORY HELEN ADAMS





Room with a view: the main living area capitalises on the spectacular views. And the burst of colour comes courtesy of the enormous lan sofa by Antidiva, covered in blue Maharam wool, from FY2K. The patterned cushions are from Freedom and the orange cushion is from Domayne.



No strings attached: white shelves and cabinets on white walls create a floating sensation for any objects on display. The artwork is by Michelle. **BELOW LEFT** Blackbutt timber provides a practical and stylish decking solution.



Panoramic ocean views and tranquil, open-plan living spaces are what greet guests as they step through the floor-to-ceiling glass doors of Michelle and Tom Bishop's home on Sydney's northern beaches. "We were keen to create a house that made the most of natural light, had a simple, yet quality, feel and capitalised on the view," explains Michelle.

And if any couple were to pull off their vision exactly to plan, it was always going to be this one. Michelle and Tom are part of the Evolve Building Group – while Tom takes care of the building work, interior designer Michelle injects the finishing touches. Together, they had plenty of ideas for their family home and some savvy, timesaving solutions.

The first of which was to opt for a delayed settlement on their building block. "This way, we could make sure the plans had council approval before we fully exchanged," explains Michelle. "Although you pay slightly more, it means you can plan the project and start building on the day of settlement, so less time is wasted."

Then, Michelle and Tom called in architect John Hooghuis, of Playoust Churcher Architects. "John designed our last house and we are now good friends. We gave him the site information and he came back with drawn-up plans. We then sat down and refined the details." >

Take a seat: the kitchen island bench becomes a breakfast bar with the addition of Bertioia chairs.

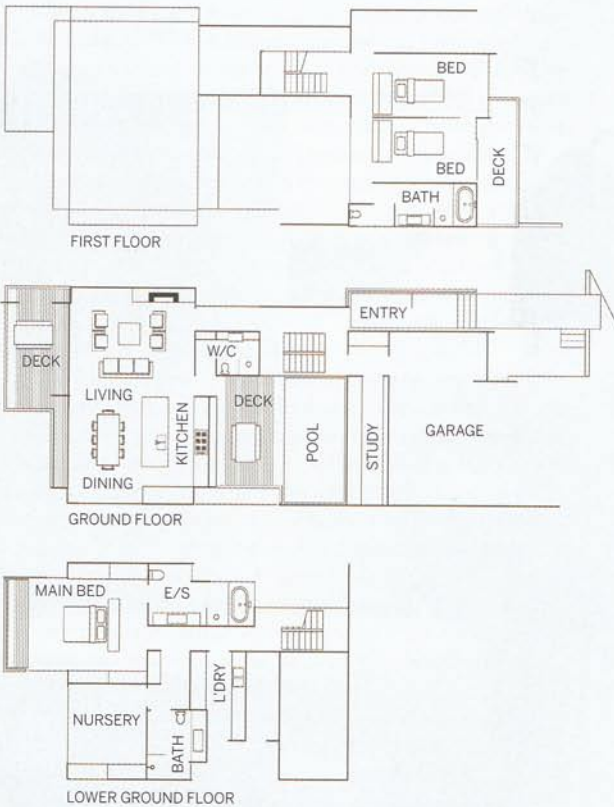




Light lunch: outdoor dining by the pool is a breeze with such easy access to the kitchen.

we love...
the pool area

Because Michelle and Tom's house is on a hill, installing the pool in the backyard would have put it in plain view of the neighbours. Positioning it, instead, in the central courtyard not only offers privacy, but also places it in a spot that's easily seen from most rooms in the house and creates a light well for the rest of the property. "Because it is adjacent to the living area, it is ideal for entertaining, and kids love it," says Michelle.



< The result is a spacious, four-bedroom, light-filled home split over three levels. The most impressive area is on the ground level. Here, an open-plan space, featuring the kitchen, living and dining areas, opens onto a deck with sea views. There is also a central courtyard, with pool and entertaining area and, at the rear, a study and bathroom.

This set-up reflects light throughout the surrounding spaces and provides plenty of privacy for a family at play. Bi-folds allow a seamless flow between the indoor and outdoor areas, and sliding glass windows by the kitchen open out to a bar area by the pool, making it perfect for entertaining. The bedrooms and bathrooms are located on the levels below and above.

"The first house we built for ourselves had warm finishes, such as timber floors, but this time we wanted to create something more edgy," explains Michelle. So, it was in with smooth concrete flooring and a more modern, streamlined feel. Structural beams were hidden behind white-painted walls to lighten up the look of the home and give the impression of floating spaces, while louvre windows were introduced to let in light and provide that all-important cross-ventilation.

Today, the family spends most of its time in the open-plan area of the house, where walls are lined with white, flat-fronted cupboards, which provide maximum storage space but have minimal impact on the eye. Even a fireplace has been integrated into one of the banks of cabinetry. This whitewash continues into the kitchen, where it's >



Gently does it; the simple and seamless style of the living areas flows through to the bedrooms. Sheridan cushions introduce subtle colour. **BELOW** Soft-grey ties and green Domayne towels set the tone in the main ensuite and bring home a tranquil feel.

